

Model 4500 Series

Durable Metal Bunk Bed



pictured with optional accessories

Stylish.

HEAVY-DUTY.

Affordable Metal Bunk Bed.

Features

Item Number

Size

45-300	30"W x 76"/80"L x 65"H
45-360	36"W x 76"/80"L x 65"H
45-380	38"W x 76"/80"L x 65"H



Bunks bolt together

Bed End Construction

Spring Base Construction

Finish/Paint

- Will not fracture under a bend test
- Free from rust, scale, pits, scratches, and buckles
- **Demountable Design**
- Strong tubular steel used in posts and cross members
- 2 posts and 3 cross members for added support
- **Headboard and footboard bolt together for added safety**
- Double hook locks
- No exposed raw metal edges
- Multi-welded for durability and long-lasting service
- Side rails are 2" x 1 1/2" x 5/32 rail steel angle with a 2" flange
- End angles are 2" x 1 1/2" x 5/32 rail steel angle with 1 1/2" flange
- **Spring Base converts from 76" length to XL 80" length**
- All corners fitted with shoulder rivets to fit double hook locks
- Contains 15 stands of "Z" hook springs
- Springs connected by 4 rows of carbon wire
- **Sleep surface rated for intense use up to 350 lbs.**
- Optional safety bolt ensures spring bases won't dislodge
- Top quality powder coating
- All surfaces cleaned and degreased for optimum paint adhesion
- Paint hardened by baking at 325 degrees F for 20 minutes

Model 4500 Series *Metal Bunk Bed*

Continued

Specifications



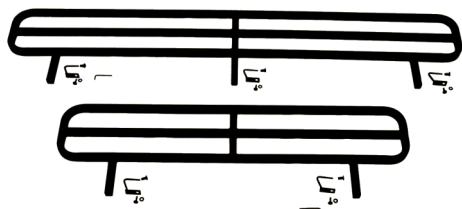
Spring Base converts from
76" length to XL 80" length

- 45-300**
 - Sleep Surface: 30" W x 76"/80" L x 66" H
 - Overall Dimensions: 30" W x 79"/84" L x 66" H
 - Weight - 126 lbs.
- 45-360**
 - 36" W x 76"/80" L x 65" H
 - Overall Dimensions: 36" W x 79"/84" L x 66" H
 - Weight - 138 lbs.
- 45-380**
 - 38" W x 76"/80" L x 65" H
 - Overall Dimensions: 36" W x 79"/84" L x 66" H
 - Weight - 145 lbs.

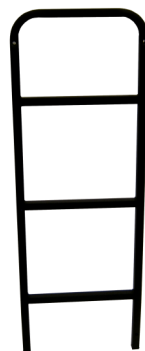


Easily converted into
2 single bed units

Available Accessories:



Adapt-A-Rail



Adapt-A-Ladder